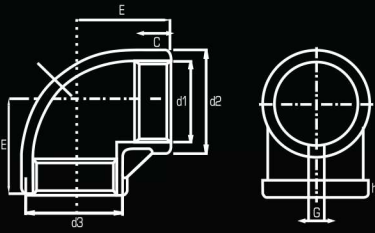


CONEXIONES FUNDIDAS 150 LIBRAS ASTM A351

Codo 90° NPT

DIMENSIONES

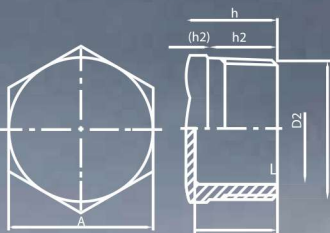
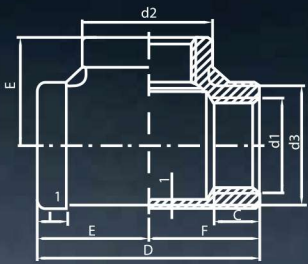
(ESPECIF/TAM)	1/4"	3/8"	1/2"	3/4"	1"	1 1/4"	1 1/2"	2"	3"	4"
d1 mm..	1/4"	3/8"	1/2"	3/4"	1"	1 1/4"	1 1/2"	2"	3"	4"
d2 mm..	18.3	21.7	26.6	32.1	39.5	49.2	54.3	68.2	99.0	125.0
C mm..	9.4	9.7	12.0	12.0	14.0	16.0	18.0	18.0	24.0	24.0
h mm..	6.0	6.5	7.5	8.5	10.0	11.0	12.0	13.0	15.0	15.0



Tee Recta NPT

DIMENSIONES

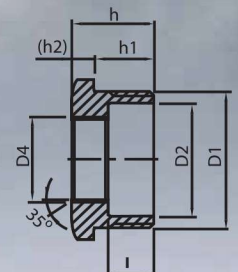
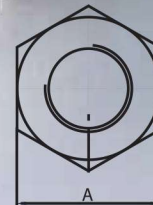
(ESPECIF/TAM)	1/4"	3/8"	1/2"	3/4"	1"	1 1/4"	1 1/2"	2"	3"	4"
d1 mm..	1/4"	3/8"	1/2"	3/4"	1"	1 1/4"	1 1/2"	2"	3"	4"
d2 mm..	18.3	21.7	26.6	32.1	41.0	49.2	55.5	68.2	99.0	125.0
C mm..	9.4	9.7	12.0	12.0	14.0	16.0	18.0	18.0	24.0	25.0
D mm..	38.0	46.0	54.0	64.0	76.0	90.0	96.0	114.0	156.0	192.0



Tapon macho NPT

DIMENSIONES

(ESPECIF/TAM)	1/4"	3/8"	1/2"	3/4"	1"	1 1/4"	1 1/2"	2"
A mm..	17.0	21.0	26.0	32.0	38.0	46.0	52.0	65.0
D2 mm..	-	11.3	14.6	19.9	25.8	34.5	39.5	51.5
h mm..	16.0	16.0	19.5	21.0	24.0	27.0	27.0	32.0



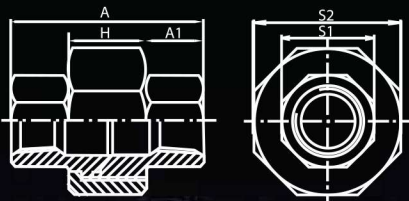
Reducción Bushing

DIMENSIONES

(ESPECIF/TAM)	1/4" x 1/8"	3/8" x 1/4"	1/2" x 1/4"	1/2" x 3/8"	3/4" x 1/4"	3/4" x 3/8"	3/4" x 1/2"	1" x 1/4"	1" x 3/8"	1" x 1/2"	1" x 3/4"
A mm..	16.5	21.8	25.5	25.5	31.5	31.5	31.5	38.0	38.0	38.0	38.0
L mm..	-	-	13.4	18.4	18.4	15.0	23.5	23.5	20.0	20.0	19.0
h mm..	16.0	18.5	20.0	20.0	25.0	25.0	25.0	30.5	30.5	30.5	30.5

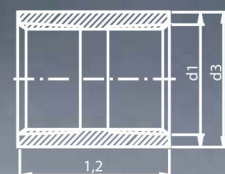
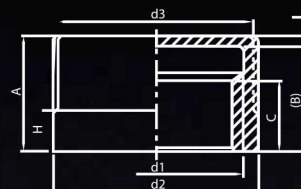
Tuerca Unión NPT

(ESPECIF/TAM)	DIMENSIONES							
	1/4"	3/8"	1/2"	3/4"	1"	1 1/4"	1 1/2"	2"
A±1.5 mm..	36.3	37.2	39.1	45.4	49.0	51.1	54.2	58.8
A1±0.5 mm..	10.5	11.0	11.6	14.9	15.5	14.5	15.0	16.4
H±0.5 mm..	15.0	15.0	15.0	15.5	18.0	21.3	22.2	25.2
S1±1.0 mm..	16.8	20.2	24.5	29.7	36.5	46.2	52.3	64.6
S2±1.0 mm..	27.6	34.0	39.5	46.7	54.0	63.9	73.5	86.9



Tapón Capa

(ESPECIF/TAM)	DIMENSIONES							
	1/4"	3/8"	1/2"	3/4"	1"	1 1/4"	1 1/2"	2"
d1 mm..	1/4"	3/8"	1/2"	3/4"	1"	1 1/4"	1 1/2"	2"
d2 mm..	18.3	21.7	26.6	32.1	39.5	49.2	55.5	68.2
A mm..	18.5	19.5	21.1	21.7	24.8	26.5	30.0	34.2
C mm..	9.4	9.7	10.0	11.0	15.0	17.5	18.0	18.0



Coples

(ESPECIF/TAM)	DIMENSIONES									
	1/4"	3/8"	1/2"	3/4"	1"	1 1/4"	1 1/2"	2"	3"	4"
d1 mm..	1/4"	3/8"	1/2"	3/4"	1"	1 1/4"	1 1/2"	2"	3"	4"
d3 mm..	18.5	21.5	26.5	32.0	39.5	48.5	54.5	66.5	100.0	129.0
L2 mm..	27.0	28.0	36.0	39.0	43.0	48.0	48.0	56.0	71.0	83.0

Reducción Bushing

(ESPECIF/TAM)	DIMENSIONES										
	1 1/4" X 3/4"	1 1/4" X 1"	1 1/2" X 1/2"	1 1/2" X 3/4"	1 1/2" X 1"	1 1/2" X 1 1/4"	2" x 1/2"	2" x 3/4"	2" x 1"	2" x 1 1/4"	2" x 1 1/2"
A mm..	46.0	46.0	51.8	51.8	51.8	51.8	62.5	62.5	62.5	62.5	62.5
L mm..	20.5	17.5	23.5	22.5	19.5	18.5	23.8	23.0	20.0	18.5	18.0
h mm..	31.5	31.5	33.5	33.5	33.5	33.5	34.0	34.0	34.0	34.0	34.0